



# BVR19

## BRUSH CHIPPER

GENERAL	US	METRIC
Height (single/tandem)	9'	2.7 m
Width (single/tandem)	7'8"	2.3 m
Length	18'10"	5.7 m
Gross weight (single, tandem)	9,000/10,500 lb	4,082/ 4,763 kg
Suspension (single axle)	(1) 12,000 lb Torflex	1 (5,443kg) Torflex
Suspension (tandem axle)	(2) 7,000 lb Torflex	2 (3,175 kg) Torflex
Infeed opening (height x width)	39" x 64"	99 x 163 cm
Throat opening (height x width)	20" x 25.4"	50.8 x 64.5 cm
Drum (width x diameter)	24-5/8" x 30"	83 x 76.2 cm
Engine	PSI, CAT, Deutz	
Horsepower	174–275 HP	129.7–205 kW
Fuel tank (capacity)	40 gallons	121.1 L
Hydraulic oil capacity	18 gallons	45.2 L
Frame	6" C-Channel	15.2" C-Channel
Tires	235/75R x 17.5	
Hitch	2.5" Pintle	6.4 cm Pintle



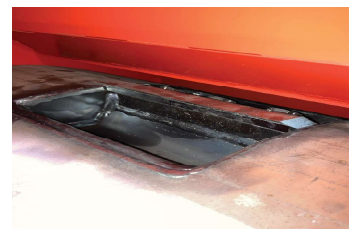
Infeed-Mounted Control Panel



Composite Fuel and Hydraulic Tanks



Side Load Anvil



Counter Knives

### EQUIPMENT HIGHLIGHTS

- Choice of gas or diesel engine and choice of single or tandem axle.
- Composite fuel and hydraulic tanks.
- Croft style hitch with multiple height adjustments.
- Dual horizontal feed wheels with hydraulic lift assist.
- Staggered knife pocket drum with four (4) dual-edged chipper knives and reversible counter knives.
- 3 position electronic control bar with dual safety pull cables within infeed.
- 360° discharge with multiple locking positions.
- Machine is equipped with reversible counter knives to help decrease drum pocket wear, resulting in less downtime and maintenance cost. Also helps to create a more consistent size chip.

### OPTIONS INCLUDE

- Axle Options Available
- Bottom Bump Bar
- Cone Holder
- Chocks/Chock Holder
- Flow Control
- Hydraulic Rear Stabilizers
- Hydraulic Swivel Discharge
- Manual Rear Stabilizers
- Pusher Paddle
- Rubber Infeed Curtain
- Spare Tire and Mount
- Strobe Light
- Winch Package
- 12" & 18" Hitch Extension

