

# MORBARK® 30/36B NCL WHOLE TREE CHIPPER



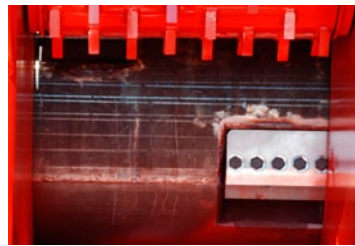
## BENEFITS

- Direct flow discharge chute allows you to fill trucks denser, creating additional tons per load.
- Morbark's proven drum design with a staggered knife pattern and replaceable wear insert increase efficiency.
- 30/36B's high production rate increases fuel economy, reducing operating costs.
- Morbark Integrated Control Systems allows for diagnostic monitoring to reduce down time.
- Like all Morbark equipment, the 30/36B is a long-lasting, durable machine backed by a world-class parts and service support team.



### Morbark Integrated Control Systems (MICS)

This ultimate diagnostic system monitors hydraulic pressures, temperatures, clutch systems and engine efficiency to maximize performance.



### Drum

The Advantage 3™ drum creates more uniform chips and reduces operating and maintenance costs.



### Discharge

Directional flow discharge chute is hydraulically adjustable by remote control for maximum chip loads.



### Infeed System

Aggressive live floor and large top feedwheel ensure positive feed of brushy tops and limbs.

## SPECIFICATIONS

SPECIFICATIONS MAY VARY WITH EQUIPMENT OPTIONS 1/18/12

### General

Length . . . . . 32'8"  
 Height . . . . . 11'8"  
 Width . . . . . 8'6"  
 Gross weight . . . . . 31,660 lbs.  
 Tongue weight . . . . . 12,460 lbs.  
 Axle weight . . . . . 19,200 lbs.  
 Tandem axle . . . 36,000 lbs. leaf spring suspension  
 Engine . . . . . CAT or John Deere  
 Horsepower . . . . . 440 HP to 540 HP  
 Fuel capacity (tank) . . . . . 190 gallons  
 Hydraulic oil capacity . . . . . 170 gallons  
 Chipping capacity . . . . . 22" diameter  
 Tires . . . . . LT 235/85R/16, 12-ply radial  
 Brakes . . . . . air  
 Towing arrangement . . . . . 3" pintle hitch  
 Yoke Inclinometer

### Infeed System

Infeed opening 31" x 37"  
 Infeed System consists of one 22" diameter top compression feed roll with internal drive and a 30" wide x 11'6" long live floor equipped with two strands of WDH-110 chain in a staggered configuration.

### Chipper Assembly

Drum diameter . . . . . 36"  
 Drum width . . . . . 34 1/2"  
 Chipper knives (6) . . . . . 11" x 7 5/16" x 3/4" thick  
 Counter knives (6) . . . . . 11" x 6 3/8" x 1/2" thick  
 Knives and Counter knives are Babbitt-style and made of A-8 modified steel  
 Drum speed . . . . . 946 RPM  
 Feed drive . . . . . hydraulic

### Discharge System

Straight discharge chute includes hydraulically operated chip deflect with vertical and horizontal adjustment.

### Remote

Wireless remote control with a 60' tethered remote back-up system for chipper operation. Tethered functions include forward/reverse of feed works, up and down of top feed roll, operation of chip discharge spout and throttle.

### Options

Light package  
 ESPAR heating system for cold-weather start  
 11 HP air compressor with lockable enclosure  
 Rear hydraulic stabilizers  
 Reversing fan



**MORBARK®**  
 BUILDING EQUIPMENT THAT CREATES OPPORTUNITIES

800.831.0042  
 989.866.2381  
 www.morbark.com

PO Box 1000  
 8507 S. Winn Rd.  
 Winn, MI 48896